

CERTIFICATIONS & QUALIFICATIONS

- ISO 9001
- UL 508a and UL 698a
- Rockwell System Integrator
- Platinum Inductive Automation Integrator
- Quality Management System
- ERP System
- Lean and 5S
- 2,000+ days without a Lost Time Accident

INDUSTRIES



- Aggregate Mining
- Automotive
- Baggage Handling



- Brick
- Energy



- Fiberglass
- Food & Beverage
- Glass



- Grain Handling
- Industrial & Commercial Machinery
- Industrial Paint/Coating



- Parcel/eCommerce
- Pharmaceutical
- Water & Wastewater

1974

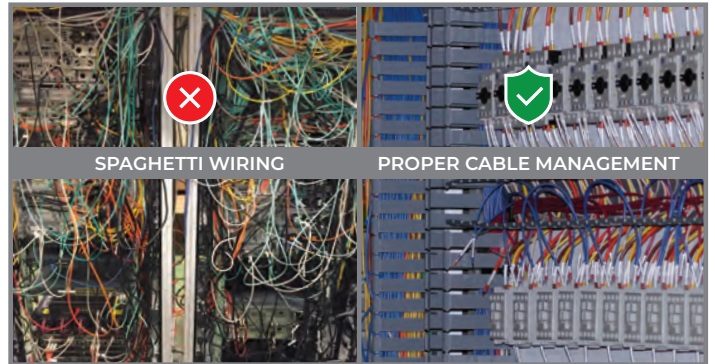
KASA FOUNDED

10,000+

TOTAL CONTROLS PROJECTS

1ST PROJECT

GRAIN - 1974 AUTOMOTIVE - 1978



Salina, KS

Dallas, TX

San Luis Potosi, México

www.kasaparcels.com

info@kasaparcels.com

785-404-3661

U.S. Corporate Office
418 East Avenue B
Salina, Kansas 67401

kasa

PARCEL AUTOMATION



kasa
PARCEL AUTOMATION
www.kasaparc.com

PANEL BUILD

Kasa's control panel design and assembly is about craftsmanship. We understand the importance of neat, organized wiring, especially if you ever have to change a panel in the future or troubleshoot a problem — no spaghetti wiring with our panels. The interior and exterior are meticulously laid out and wired with artisan skill, and labeled with easy-to-read engraved labels.

OUR SHOP

- ✓ 40,000 sq. ft.
- ✓ Environmentally Controlled
- ✓ 20 ft. High Ceilings
- ✓ Certified Wood Crates
- ✓ Covered Loading Dock with Overhead Crane
- ✓ On-Site Production Engineer
- ✓ Quality Control/Quality Assurance

- Custom Enclosures
- NFPA-79 Capability
- NEC (NFPA-70 Compliance)
- UL 508a and UL 698a